



09<sup>th</sup> and 10<sup>th</sup> June 2026.  
Hotel Hills Sarajevo, Bosnia and Herzegovina

## Halalopathy

# A system-Based Conceptual Framework Bridging Modern and Prophetic Medicine

---

Jawad Alzeer

University of Zurich



09<sup>th</sup> and 10<sup>th</sup> June 2026.

Hotel Hills Sarajevo, Bosnia and Herzegovina

# Halalopathy

## A system-Based Conceptual Framework

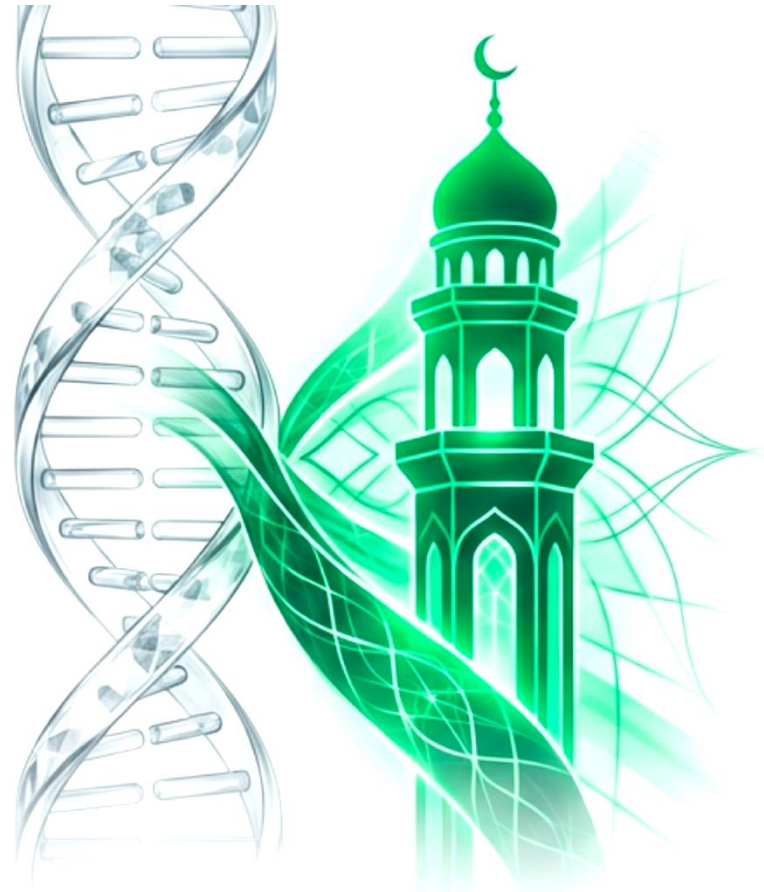
### Bridging Modern and Prophetic Medicine

Jawad Alzeer

University of Zurich

# Halalopathy – The Science of Trust Through Faith, Balance, and Energy

- Role of Halalopathy
- Modern Medicine Perspective
- Prophetic Medicine
- Bridging Principle



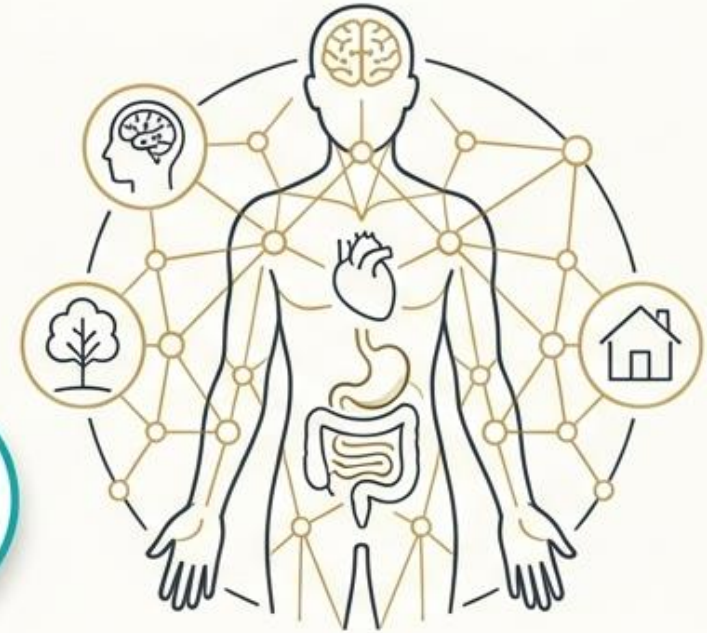
## Modern Medicine (Precision)



**The Gap:** How do we translate inner tranquility and behavioral alignment into measurable biological realities?

- Focuses on specific biological causes and targeted interventions (e.g., surgery, medication).
- Highly effective for acute, single-cause conditions.
- Limitation: Overlooks long-term, systemic interactions in multifactorial chronic diseases.

## Prophetic Medicine (Coherence)



- Views health as a state of interconnected balance, emotional control, and internal tranquility.
- Highly effective for holistic well-being and lifestyle alignment.
- Limitation: Lacks a formalized scientific structure for clinical application.

# Halalopathy: The Integrative Bridge



## Core Definition

A conceptual systems framework designed to integrate modern biomedical science with principles from Prophetic medicine.

## The Premise

Health is not limited to biological function alone. It emerges from the constant interaction between physiology, lifestyle, environment, and value-based factors.

## The Application

Halalopathy does not replace modern medicine. It provides a shared scientific language to guide hypothesis generation, personalized healing, and systemic understanding.

# Health is a Dynamic Balance

- Halalopathy applies the 2<sup>nd</sup> Law of Thermodynamics as a functional analogy
- Living systems naturally drift towards disorder.
- Health is not static; it is a homeodynamic state requiring continuous energy to sustain organization and prevent systemic failure

# Second Law of Thermodynamic

*"Allah holds the heavens and the earth lest they cease."*

*Everyone upon the earth will perish, (26) And there will remain the Face of your Lord, Owner of Majesty and Honor." (27)*



## Entropy Load

- Definition: The total accumulated demand on the system over time.
- Sources: Ongoing physiological stress, environmental challenges, and metabolic imbalances.
- Outcome: Weakens coordination between biological processes, leading to chronic conditions.



## Potential Energy

- Definition: The available capacity to maintain structure, recover from stress, and adapt.
- The Four Domains: Arises from chemical, physical, mental, and voluntary processes acting together to sustain order.

# The Four Domains of Reserve Capacity



## 1. Chemical

Micronutrients,  
mitochondrial function.

*Low Potential Example: Long-standing  
ultra-processed diet + mitochondrial  
fatigue.*



## 2. Physical

Muscle mass,  
cardiovascular integrity.

*Low Potential Example: Sarcopenia and  
dyspnea in a sedentary adult.*



## 3. Mental

Focus, emotional  
regulation.

*Low Potential Example: Ruminative  
anxiety + chronic insomnia.*

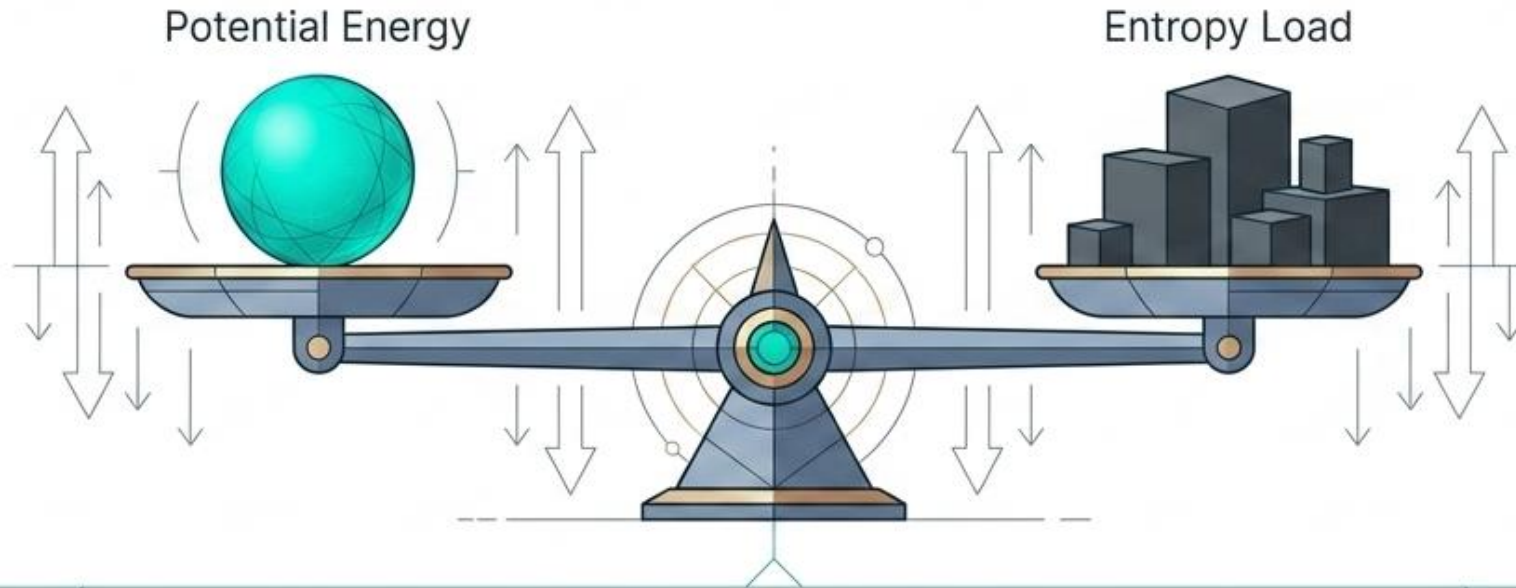


## 4. Voluntary

Willpower, alignment of  
belief and action.

*Low Potential Example: Understanding the  
plan but having 'no fuel for follow-through'.*

# Redefining Health: Homeodynamics



**[Potential Energy] > [Entropy Load] = System Balance**

## The Concept

Health is an active, continuously regulated state, not a fixed condition. Stability is achieved through continuous adaptation, with minor fluctuations resolved naturally.

## The Failure Point

Disease manifests when overlapping pressures accumulate, pushing the Entropy Load beyond the system's available Potential Energy, causing a breakdown in regulation and repair.

# The Immune System: A Window into the System Balance



## Tranquil Fight (Regulated)

**State:** "No fear, no grief." Balanced autonomic activity.

**Mechanics:** Immune system activates precisely when needed and recovers smoothly.

## Fright Mode (Dysregulated Activation)

**State:** High Entropy Load. Prolonged allostatic load.

**Mechanics:** Sustained sympathetic alert, amplified inflammatory activity, loss of precision.

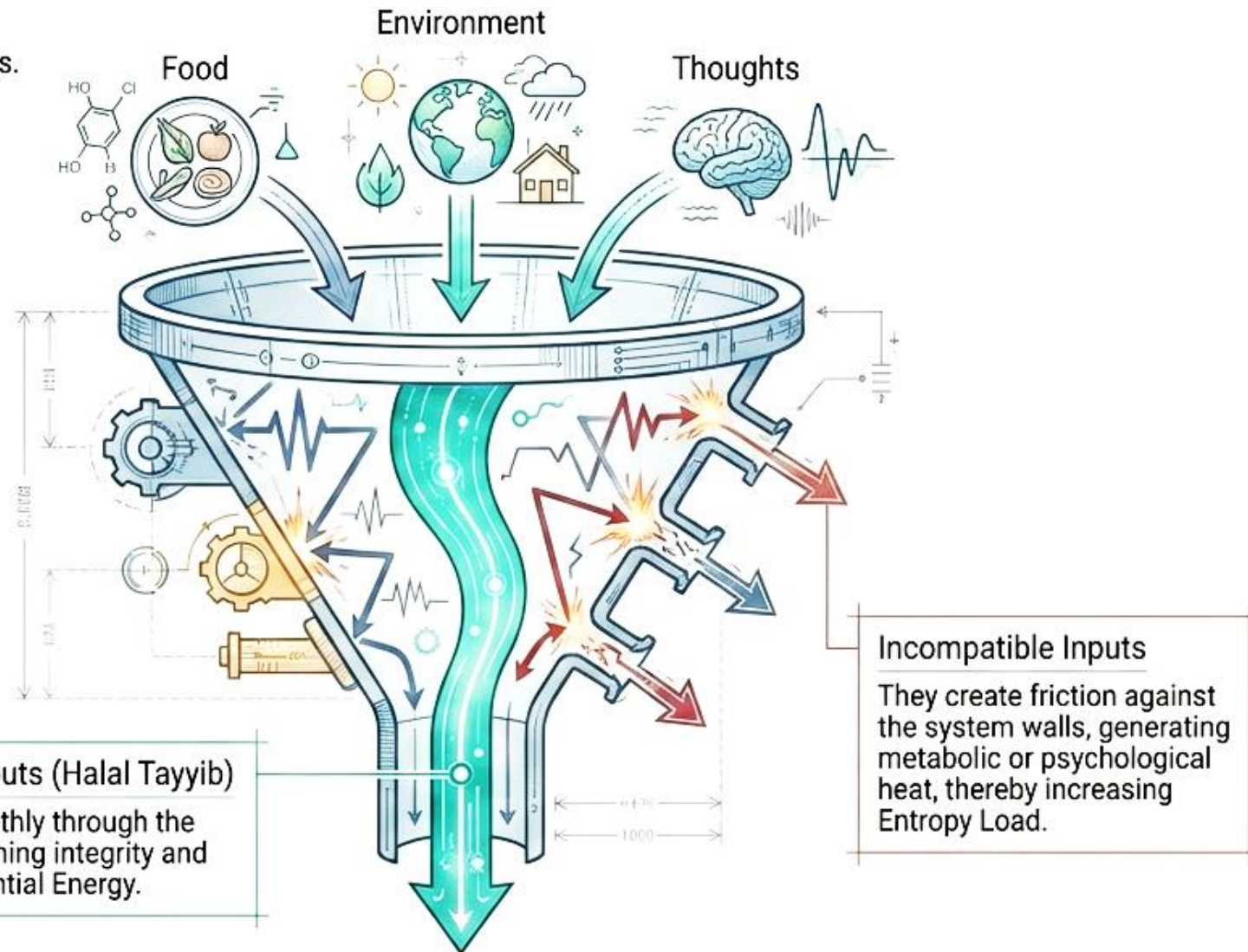
## Flight Mode (Exhaustion)

**State:** Depleted Potential Energy.

**Mechanics:** Responsiveness declines, slow recovery, system shifts to energy conservation.

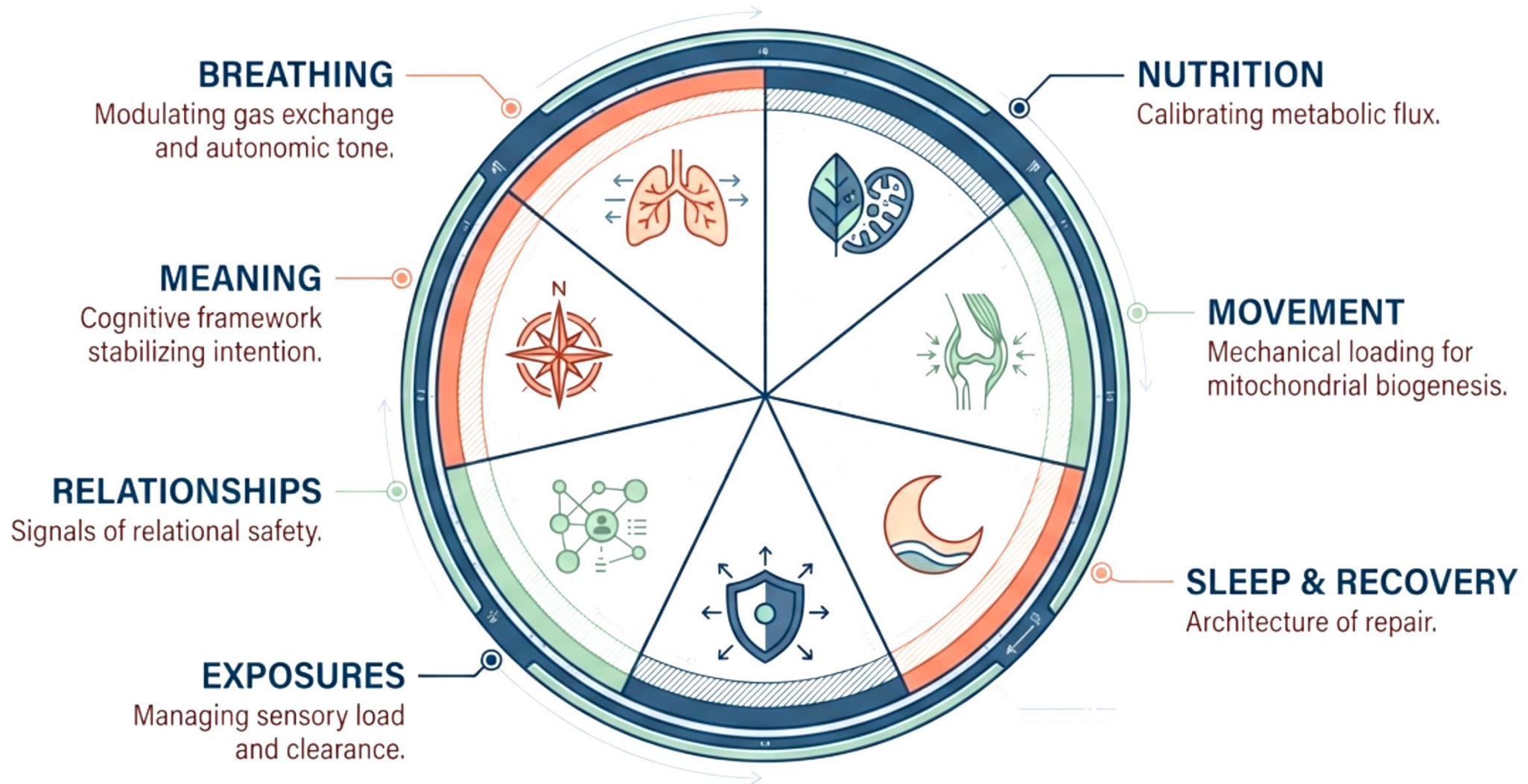
# Compatibility: The Principle of Systemic Integrity

“Halal Tayyib” extends beyond dietary rules. It represents the degree to which any input aligns with the system's natural requirements. Repeated mismatches introduce friction, gradually reducing regulatory efficiency.



# The 7 Regulatory Instruments

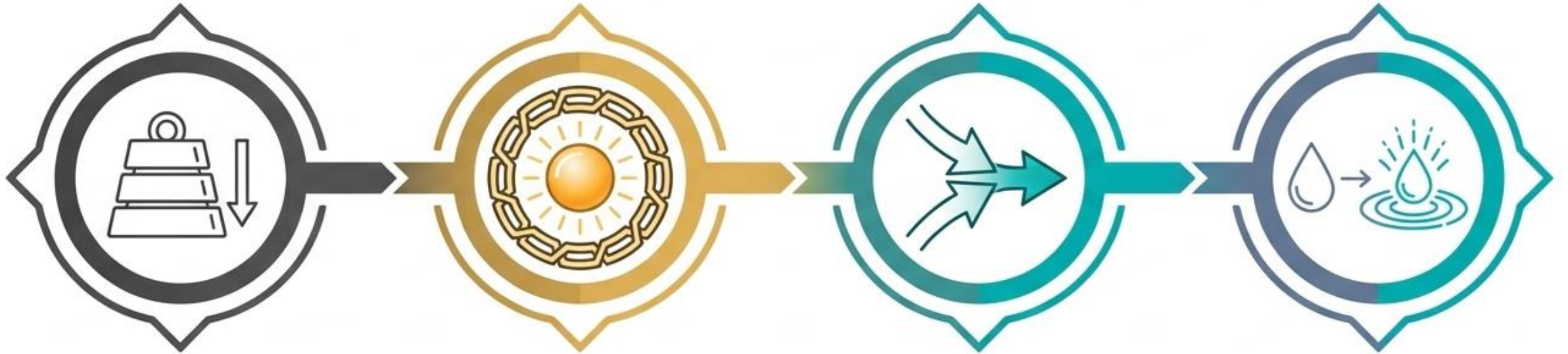
## Levers to modulate Entropy and rebuild Potential



**These are not just habits. They are precision instruments used to tune the system's thermodynamic**

# Applied Halalopathy

## Prophet Ayyub (AS): The Model of Chronic illness



### Phase 1: High Entropy Load

Sustained external hardship (health, environment).

### Phase 2: Preserved Potential Energy

Maintained internal psychological and spiritual stability (preventing internal collapse and regulating neuroendocrine signaling).

### Phase 3: Alignment

Supplication integrating awareness with trust, reducing internally generated stress.

### Phase 4: Compatible Intervention (Cool Water)

A highly precise input.  
**Internal:** Hydration supports metabolic clearance.  
**External:** High specific heat capacity aids thermoregulatory heat dissipation.

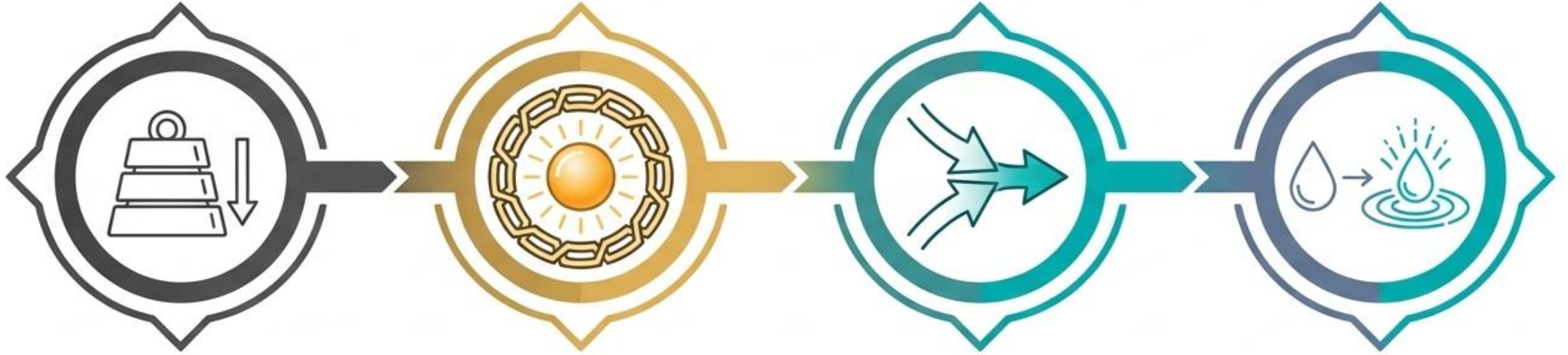
أَنِّي مَسْتَبِي الضُّرِّ وَأَنْتَ أَرْحَمُ الرَّاحِمِينَ

“Indeed, harm has touched me, and You are the Most Merciful of the merciful.”

ارْكُضْ بِرِجْلِكَ ۗ هَذَا مُغْتَسَلٌ بَارِدٌ وَشَرَابٌ

“Strike the ground with your foot; this is (a spring of) cool water for washing and drinking.”

# Prophet Yunus (AS): The Model of Acute Crisis



## Phase 1: High Entropy Load

Darkness, Fear,  
Loss of Control

## Phase 2: Preserved Potential Energy

لَا إِلَهَ إِلَّا أَنْتَ سُبْحَانَكَ إِنِّي كُنْتُ مِنَ  
الظَّالِمِينَ

*“There is no deity except  
You. Glory be to You.  
Indeed, I have been among  
the wrongdoers.”*

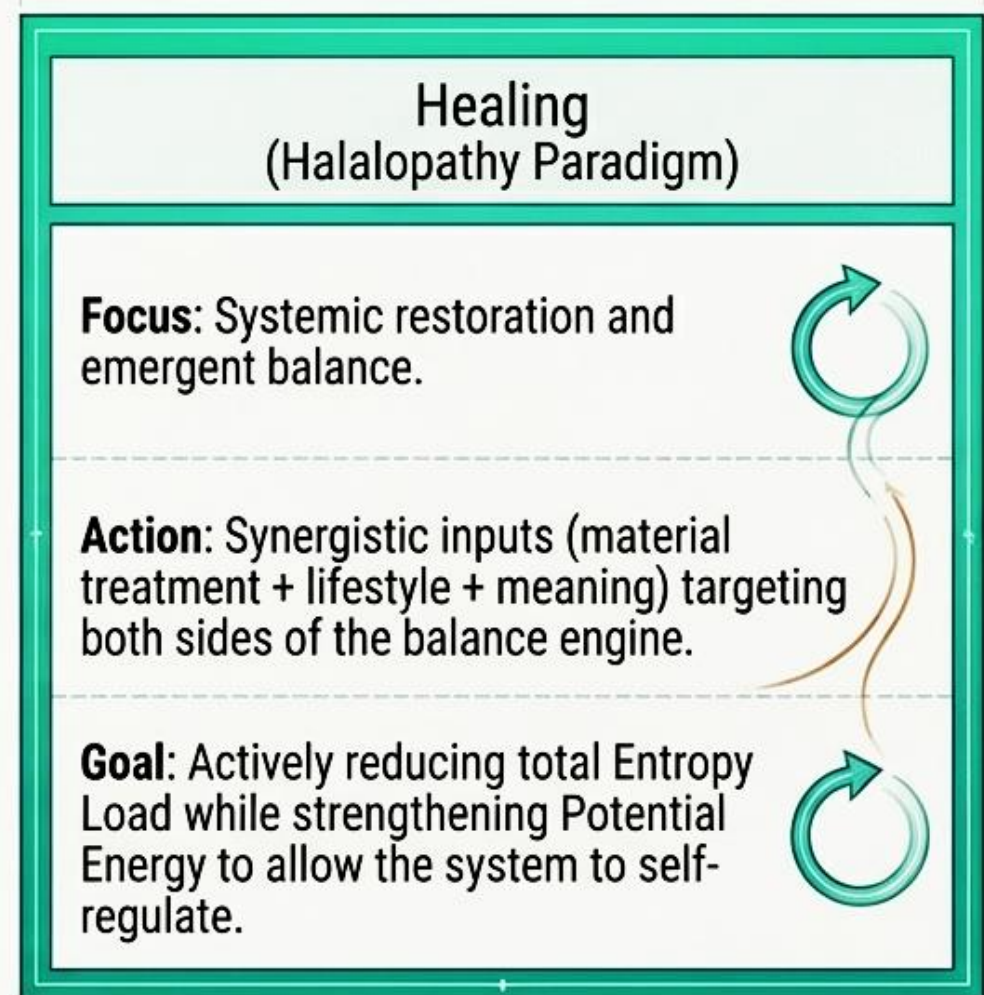
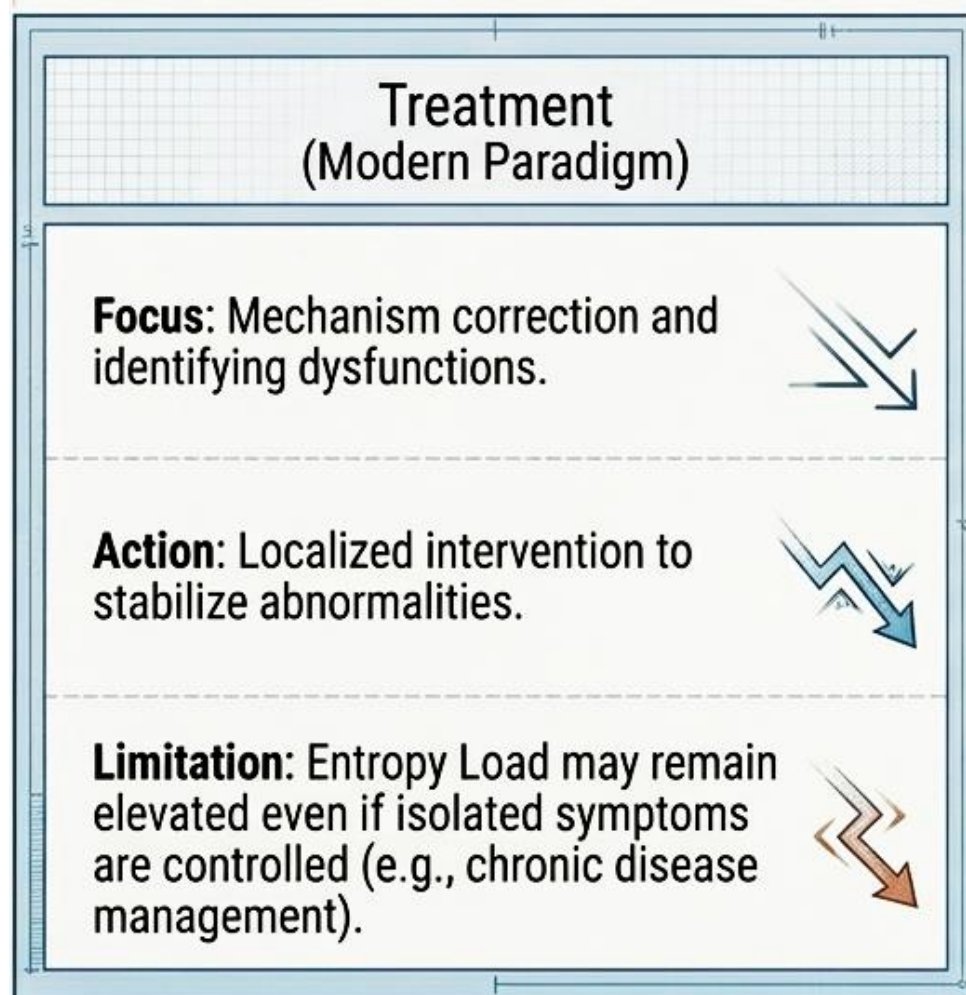
## Phase 3: Alignment

Supplication Integrating  
awareness with trust,  
reducing internally  
generated stress.

## Phase 4: Compatible Intervention (Cool Water)

Protection, Recovery, and  
restoration

# The Future of Healthcare



# Conclusion: The Restoration of Order

- Modern Medicine provides precision
- Prophetic Medicine provides wisdom
- Halalopathy provides the bridge
- Its goal is: To reduce Entropy Load, To strengthen Potential Energy,  
To maintain the immune system in Tranquil Fight.

“And when I fall ill, it is He who heals me.” (Qur’an 26:80) –  
Medicine provides the means; Allah provides the cure.

# THANK YOU FOR ATENTION

---



Jawad.alzeer@uzh.ch



+41779281248



University of Zurich

